



Iwaki City Disaster Management Map (Kawamae Region)

Outline of disaster information

Projected Extent of River Flood Inundation (Natsui/Same/Binda/Fujiwara/Nametsu/Ohisa River Systems)

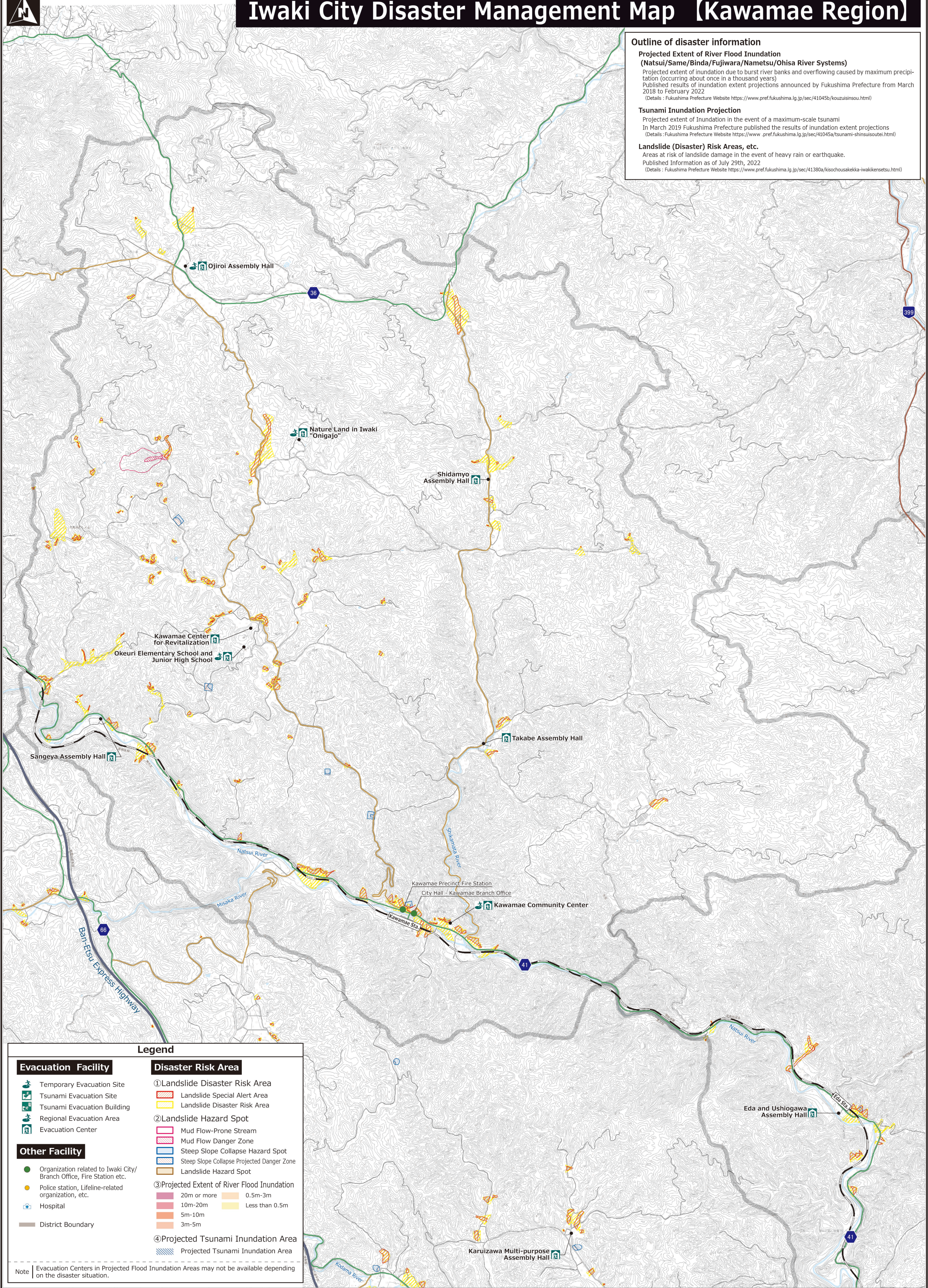
Projected extent of inundation due to burst river banks and overflowing caused by maximum precipitation (occurring about once in a thousand years)
Published results of inundation extent projections announced by Fukushima Prefecture from March 2018 to February 2022
(Details : Fukushima Prefecture Website <https://www.pref.fukushima.lg.jp/sec/41045b/kouzuisinsou.html>)

Tsunami Inundation Projection

Projected extent of Inundation in the event of a maximum-scale tsunami
In March 2019 Fukushima Prefecture published the results of inundation extent projections
(Details : Fukushima Prefecture Website <https://www.pref.fukushima.lg.jp/sec/41045a/tsunami-shinsuisoutei.html>)

Landslide (Disaster) Risk Areas, etc.

Areas at risk of landslide damage in the event of heavy rain or earthquake.
Published Information as of July 29th, 2022
(Details : Fukushima Prefecture Website <https://www.pref.fukushima.lg.jp/sec/41380a/kisochousakekka-iwakikensetsu.html>)



Legend

Evacuation Facility

- Temporary Evacuation Site
- Tsunami Evacuation Site
- Tsunami Evacuation Building
- Regional Evacuation Area
- Evacuation Center

Other Facility

- Organization related to Iwaki City/ Branch Office, Fire Station etc.
- Police station, Lifeline-related organization, etc.
- Hospital
- District Boundary

Disaster Risk Area

- ①Landslide Disaster Risk Area
 - Landslide Special Alert Area
 - Landslide Disaster Risk Area
- ②Landslide Hazard Spot
 - Mud Flow-Prone Stream
 - Mud Flow Danger Zone
 - Steep Slope Collapse Hazard Spot
 - Steep Slope Collapse Projected Danger Zone
 - Landslide Hazard Spot
- ③Projected Extent of River Flood Inundation
 - 20m or more
 - 10m-20m
 - 5m-10m
 - 3m-5m
 - 0.5m-3m
 - Less than 0.5m
- ④Projected Tsunami Inundation Area
 - Projected Tsunami Inundation Area

Note | Evacuation Centers in Projected Flood Inundation Areas may not be available depending on the disaster situation.